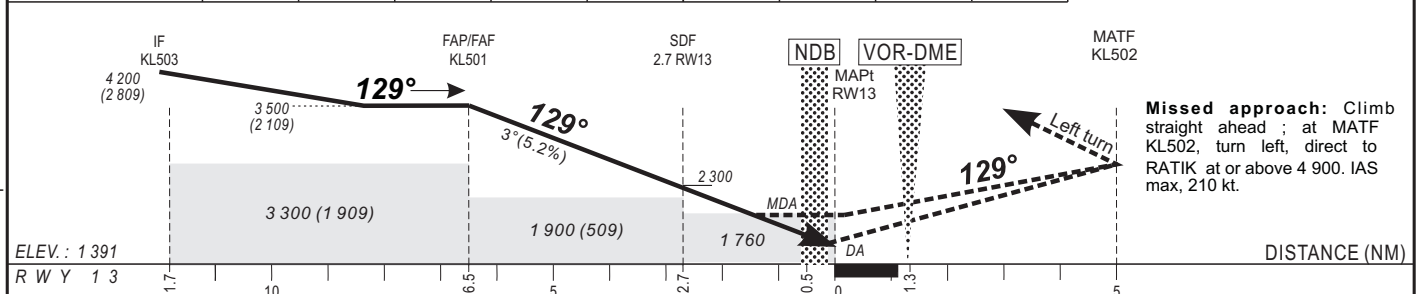


Distance to RW13 (NM)	FAP/FAF	6	5	4	3	2	1	Notes: - RDH: 15 m - Minimum temperature: 10°C
Altitude (ft)	3 500	3 350	3 040	2 720	2 400	2 080		



OCA(OCH)	A	B	C	D	Ground speed (kt)	kt	90	100	120	140	160	180
LNAV/VNAV	1643(260)	1655(270)	1663(280)		Rate of descent (ft/min)	ft/min	475	525	630	740	840	-
LNAV	1759(368)				Timing FAF-MAPt 6.1 NM	min:sec	4:20	3:54	3:15	2:47	2:26	-
CIRCLING*	2082(691)	2082(691)	2372(981)									

Timing not authorized for defining MAPt (LNAV).  
 (\*) Heights related to aerodrome elevation.  
 For data tabulation, see verso.

(\*\*) Transition altitude: 5400 ft from QDM 058° to 228° and 4 500 ft from QDM 228° to 058°

CHANGES: New edition- Magnetic variation updated.